

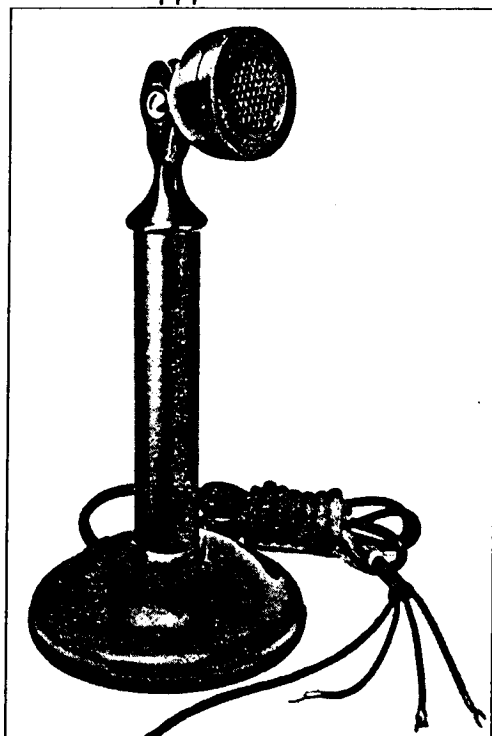
DYNAMIC

MICROPHONE
632A
<i>Western Electric</i>

MICROPHONE

for

SOUND SYSTEMS



THE WESTERN ELECTRIC

632A Microphone meets the need for a low price dynamic microphone for close talking applications such as may be encountered in announcing and public address systems. In these fields particularly, the 632A has become increasingly useful because of its exceedingly quiet operation, absence of overloading, ruggedness, and freedom from temperature and humidity effects.

The 632A Microphone employs a pressure unit similar in principle to that used in the well-known Western Electric 633 and 639 Dynamic and Cardioid Directional Microphones, but designed so that its response is more suitable for close talking purposes. This pressure unit is housed in a black phenol plastic case and is terminated with two flexible cords brought out through holes in the rear of the case.

The 632A Microphone has an outside diameter of approximately $2\frac{1}{8}$ ", a depth of $2\frac{5}{8}$ " and weighs approximately 8 oz. The assembly is arranged to mount directly on the Western Electric 20CJ or 20DA Desk Stand. Connections to the microphone then may be made by means of a 3 conductor, 6 foot D3N Cord.

For best results under close talking conditions, the Microphone has been designed to give a rising characteristic from 150 to 5000 cycles. The output level is approximately —80 dbm. The impedance of the microphone is approximately 25 ohms. This low impedance permits the microphone to be used several hundred feet from its associated amplifier.

Western Electric

FEATURES

Designed for Sound Systems.

Quiet operation.

Absence of overloading.

Ruggedness.

Freedom from temperature and humidity effects.

Low impedance permits microphone to be used several hundred feet from its associated amplifier.

Means are provided for equalizing the barometric pressure and for draining off the moisture caused by breath condensation.

Constructed so that user will not come in contact with the electric circuit when his lips touch the face of the instrument.

Parts insulated from one another.

TYPICAL SPECIFICATIONS

Frequency Range: Essentially uniform 150 to 5000 cycles.

Sensitivity: -90 db from 1 volt per dyne per square centimeter.

Signal to noise ratio: 54 db (the signal generated by a sound pressure of 1 dyne per square centimeter is 54 db above the thermal noise generated within the microphone).

Impedance: 25 ± 2 ohms.

Power Output Level: 80 db below 1 milliwatt for a sound pressure of 1 dyne per square centimeter.

60 db below 1 milliwatt for a sound pressure of 10 dynes per square centimeter.

Mounting: The microphone in its case is mounted on Western Electric 20CJ or 20DA Desk Stand, or equivalent, and is equipped with a six foot, three conductor cord, similar to the Western Electric D3N. The 20DA has a press-to-talk lever on the side.

Dimensions and Weight: Weight: eight ounces (approx.); outside diameter: $2\frac{1}{8}$ " (approx.) depth: $2\frac{3}{8}$ ".

DISTRIBUTOR IN THE UNITED STATES

Graybar
ELECTRIC COMPANY

Executive Offices: 420 Lexington Avenue, New York 17, N. Y.

Offices in more than 90 principal cities

A NATIONAL ELECTRIC SERVICE

DISTRIBUTOR FOR CANADA AND NEWFOUNDLAND

Northern Electric
COMPANY LIMITED

General Offices: 1620 Notre Dame Street, W.

Plant: 1261 Shearer Street,
Montreal, P. Q., Canada

TWENTY-SIX OFFICES ACROSS CANADA