

MODEL 556S BROADCAST UNIDYNE II

General: Combining a highly effective unidirectional pattern and wide useful frequency range, the Shure Model 556S has become one of the world's most widely used microphones. The performance characteristics and unique construction make it ideal for both outdoor and indoor use in broadcasting, recording, public address and theatre-stage applications.

The Model 556S features:

- Cardioid directional characteristic especially adapted for optimum performance in adverse acoustic environments
- Cartridge and microphone body separately shock-mounted for quiet operation
- Convenient impedance selection
- Very rugged mechanical design for reliable operation under severe conditions of use

The self-tensioning swivel permits tilting through 45° forward and 80° backward.

SPECIFICATIONS

Type: Dynamic

Frequency Response: 40 to 15,000 cps. See Fig. B.

Polar Pattern: Cardioid (Unidirectional) Response at rear down 15 db from front. See Figure D

Impedance: Equipped with multi-impedance switch, furnishing a choice of 3 impedances: "L" for 30-50 ohms; "M" for 150-250 ohms; and "H" for high impedance.

Output Level: 1,000 cps response

Model 556S 30-50 ohm "L" position
 Open circuit voltage — 83.5 db*(0.067 mv)
 Power level into 50 ohm — 56.5 db**
 EIA Microphone Rating
 Gm (Sensitivity) — 149.0 db***

Model 556S 150-250 ohms "M" position
 Open circuit voltage — 77.5 db*(0.13 mv)
 Power level into 250 ohm — 57.5 db**
 EIA Microphone Rating
 Gm (Sensitivity) — 149.0 db***

Model 556S High Impedance "H" position
 Open circuit voltage — 56.0 db*(1.58 mv)
 Loaded with
 100,00 ohm — 58.0 db**
 EIA Microphone Rating
 Gm (Sensitivity) — 152.0 db***

* 0 db = 1 volt per microbar

** 0 db = 1 milliwatt per 10 microbars

*** 0 db = EIA Standard SE-105, August 1949



Guarantee: Each microphone is guaranteed to be free from electrical and mechanical defects for a period of one year from date of shipment from factory, provided all instructions are complied with fully. In case of damage, return the microphone to the factory for repairs. Our guarantee is voided if the microphone is subjected to accident or abuse or if the case is opened.

Architect's Specification: The microphone shall be Shure Model 556S or equivalent—a moving coil type microphone with a frequency range of 40 to 15,000 c.p.s. This unit shall have a Cardioid horizontal polar characteristic. The cancellation at the rear shall be in the order of 15 db. The microphone shall be equipped with a three-position impedance change switch for adjusting the microphone rating impedance to 38 ohms, 150 ohms or 40,000 ohms. The microphone rating Gm (sensitivity at 1000 cps shall be within ± 3 db of the following levels:

"L" Position of switch — 149 db

"M" Position of switch — 149 db

"H" Position of switch — 152 db

E.I.A. Standard SE-105, August, 1949

The microphone shall be provided with a swivel adjustable from 45° forward to 80° backward. The microphone shall be equipped with a vibration-isolation unit in combination with the stand connector, and it shall have a detachable Cannon Type cable connector capable of connection to a two-conductor shielded cable. The microphone shall mount on stand having $\frac{5}{8}$ "-27 thread. The overall dimensions shall be $7\frac{3}{4}$ (196.8 mm) $\pm \frac{1}{4}$ (6.4 mm) inches in height, $2\frac{3}{16}$ (55.6 mm) $\pm \frac{1}{8}$ (3.2 mm) inches in width and $3\frac{1}{16}$ (77.8 mm) $\pm \frac{1}{8}$ (3.2 mm) inches in depth.

U. S. Patents: 2,237,298; 2,305,596, and 2,305,597.

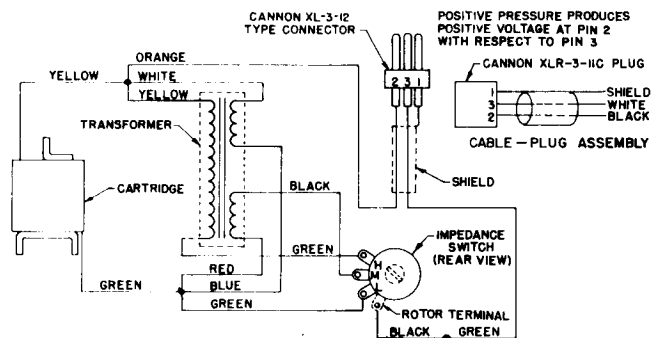


FIG. A.
INTERNAL CONNECTIONS

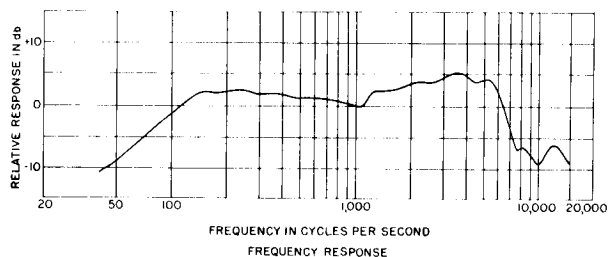
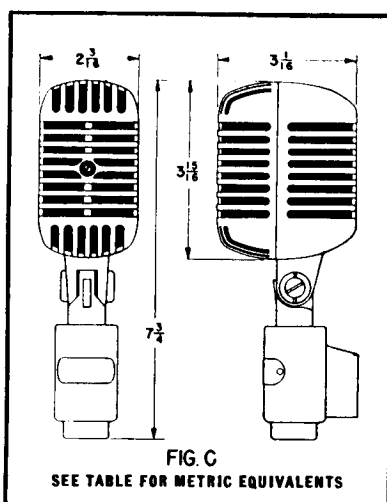
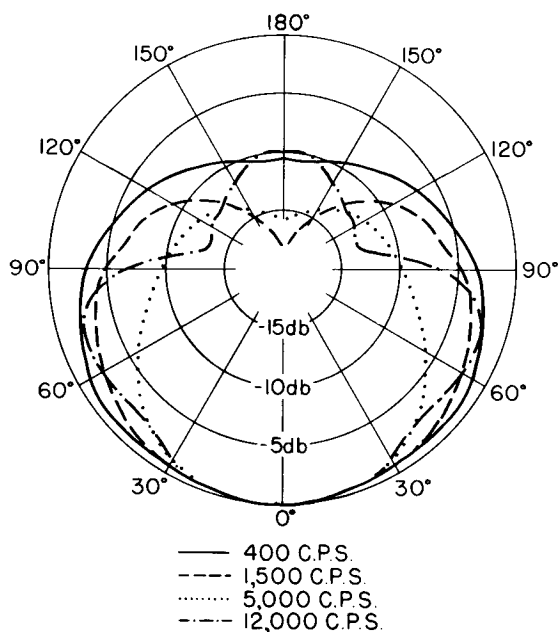


FIG. B.



MODEL 556S	
Net Wt.	2 lb. (907 g)
Shipping Weight	3 1/2 lb. (1588 g)
Cable	20 ft. (6.1m) Two-Conductor
Height, Overall *	7 3/4" (196.8mm)
Height, Case *	3 1/8" (100.0mm)
Width *	2 3/16" (55.6mm)
Depth *	3 1/16" (77.8mm)
Case	Die-cast zinc
Finish	Satin Chrome
Stand Thread	Standard 5/8"-27 Thread
Cable Connector	Cannon XL-3-11 Type Connector
Shock Mount	Special vibration isolation unit of rubber construction
Swivel	Self-adjusting "Positive Action" swivel permitting tilting of head through 45° forward to 80° backward

*See Fig. C.



POLAR PATTERN
FIG. D.