

ASTATIC

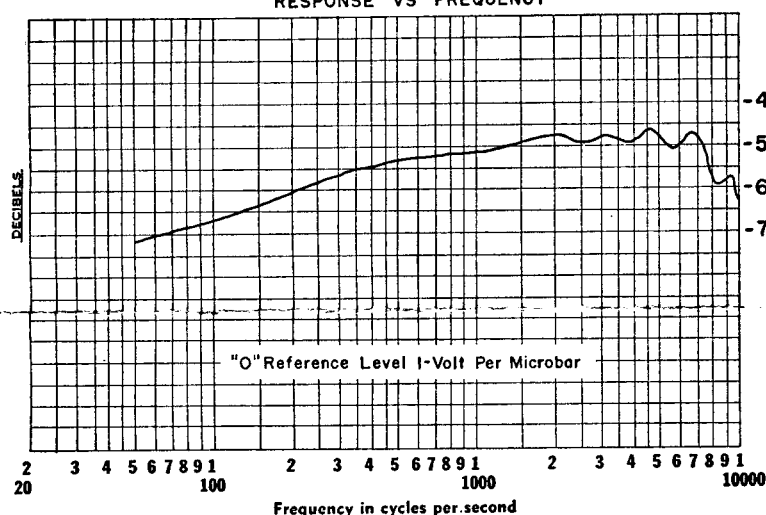
"Dynabar" Microphone

**MODEL
DR-11**

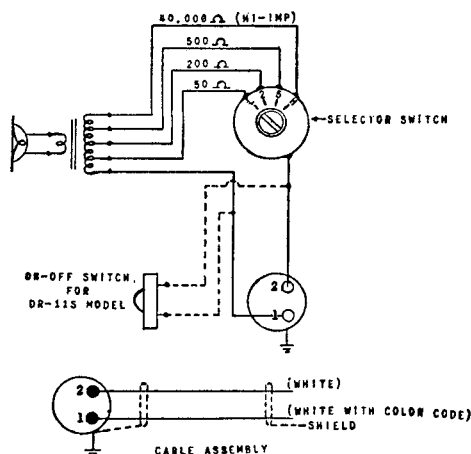
DATA AND INSTALLATION SHEET



The Astatic DR-11 is a top quality, dynamic microphone featuring unidirectional (cardioid) pickup pattern. It is recommended for broadcasting studios, paging systems, recording studios, public address, amateur radio and other difficult installations where acoustic feedback, background noise and reverberations are troublesome. It provides smooth over-all response to 10,000 cps with unusually uniform directional properties (approx. 15 db front to back differential) obtained by Astatic's exclusive SINTERED METAL method of acoustic phase shifting.

**MODEL DR-11
RESPONSE VS FREQUENCY**

The DR-11 is equipped with a multi-impedance selector switch providing operating impedances of 50, 200, 500 and HZ. The selector switch is located at rear of microphone and is slotted so it can be operated with a coin or similar tool. Figure No. 1 illustrates switch markings and impedance obtained at each setting.

**Figure 1**

INSTALLATION

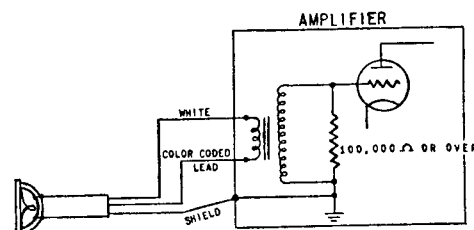


Figure 2: For amplifiers having low impedance input with selector switch set to match primary of input transformer. (Balanced Line.)

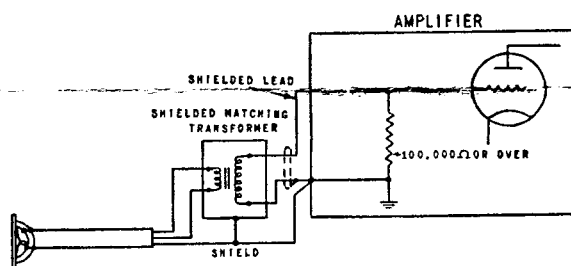


Figure 3: In cases where long microphone lines (over approx. 25 feet) are needed between microphone and an amplifier having high impedance input, it is recommended that the microphone be used as low impedance (see Fig. 2) and insert a matching transformer ahead of the regular high impedance microphone input of the amplifier as shown in Figure No. 3.

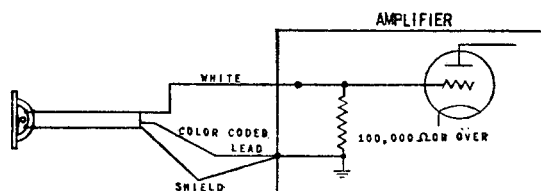


Figure 4: For high impedance input with selector switch on "H". (Unbalanced line.)

The **ASTATIC Corp.**

CONNEAUT, OHIO